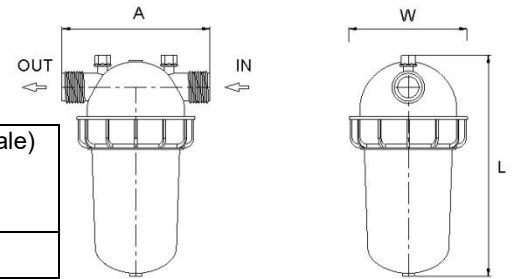


1" Short Filter

Catalog No. 012001-*****

Features

- A "T" shaped filter with two 1" male threads.
- A "T" volume filter for in-line installation on 1" pipelines.
- The filter prevents clogging due to its enlarged filtering area that collects sediments and particles.
- Manufactured entirely from fiber-reinforced plastic.
- A cylindrical column of grooved discs constitutes the filter element.
- Spring keeps the discs compressed.
- Screw-on filter cover.
- Filter discs available in various filtration grades.



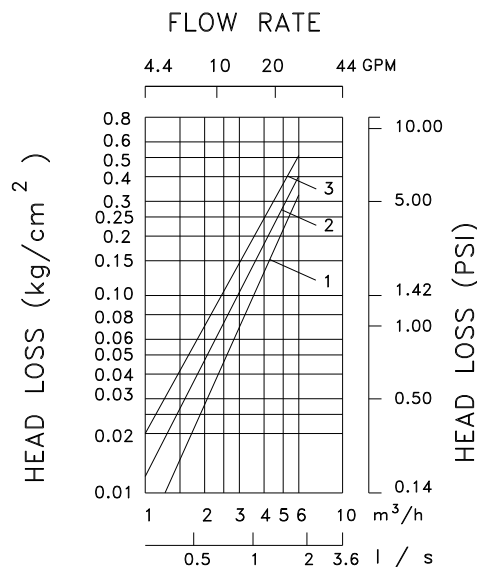
Technical Data

Inlet/Outlet diameter	1" BSPT (male)	1" NPT (male)
	25 mm – nominal diameter	
	33.6 mm – pipe diameter (O. D.)	
Maximum pressure	10 bar	145 psi
Maximum flow rate	6 m ³ /h (1.7 l/sec)	26 gpm
Total filtration area	316 cm ²	49 in ²
Total filtration volume	379 cm ³	23 in ³
Filter length L	233 mm	9 3/16"
Filter width H	130 mm	5 3/32"
Distance between connections W	158 mm	6 7/32"
Weight	1.1 Kg	2.4 lbs
Maximum temperature	70° C	158° F
pH	5-11	5-11

Filtration Grades

- Blue (400 micron / 40 mesh)
- Yellow (200 micron / 80 mesh)
- Red (130 micron / 120 mesh)
- Black (100 micron / 140 mesh)
- Green (55 micron)

Headloss Chart



Installation

1. Filter may be installed either vertically or horizontally.
2. Use Teflon tape on filter end connections.
3. Never use spanners for tightening the filter cover.

Maintenance

If the filter discs are covered with lime deposits then remove the element and treat with chloric acid.

Dismantling

1. Turn off the water.
2. Make sure that the pressure is released from the filter.
3. Unscrew the nut cover from the filter body.
4. Pull out the filter element.
5. Move the stop ring to the end of the spine.
6. Flush the discs with the water jet.

Assembly

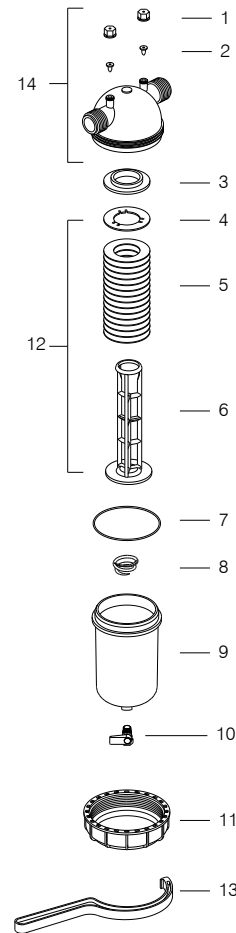
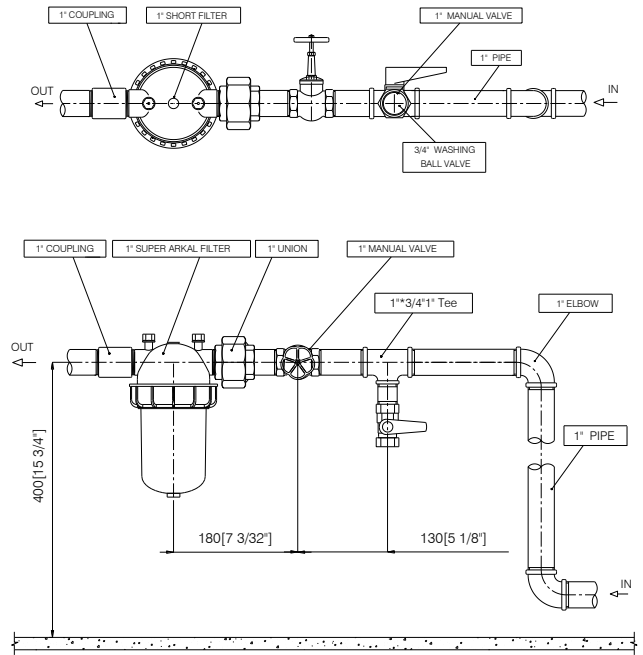
1. Verify that the tightening spring is placed in the bottom of the filter cover.
2. Assemble in reverse order.
3. Tighten the cover by turning the fixing nut clockwise and don't over tighten.

Part List - 1" Short Filter

No.	Cat. No.	Description	Materials
1.	710101-000148	Gauge ports nut	R.PP
2.	770104-000045	Gauge ports seal	EPDM
3.	710101-000854	Filter adaptor ring	R.PP
4.	710101-000131	Stop ring for element	PBT
5.	700101-*****	Disc set	PP / PE
6.	710101-000068	Spine	R.PP
7.	770101-000012	90x4 O-ring	N.R
8.	760107-000003	Filter spring	S.S.
9.	710101-000843	Filter cover	R.PA
10.	730104-000006	¼" ball valve	BRASS
11.	710101-000849	Fixing nut	R.PA
12.	700101-*****	Filter element	
13.	710101-000853	1" - 1½" Filter wrench	R.PA
14.	700190-000070	Filter body complex BSP	
	700190-000071	Filter body complex NPT	

Materials

- PBT - Polyester
- S.S. - Stainless steel
- PP – Polypropylene
- PE - Polyethylene
- N.R. - Nitrile rubber
- R.PP - Reinforced polypropylene



Manufacturer: Amiad Water Systems Ltd. Amiad, D.N. Gallil Elyon 1, 12335 Israel. Email – info@amiad.com

The product is under European Directive: 2014/68/EU PED SEP.

Requirements of Sound Engineering Practice of a member state have been met.

EC REP for CE Matters: Obelis S.A, Boulevard Général Wahis 53, B-1030 Brussels, BELGIUM. Email - info@obelis.com